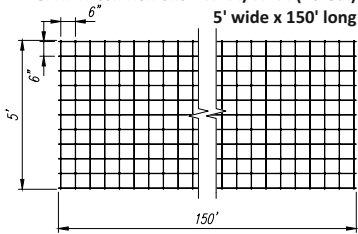
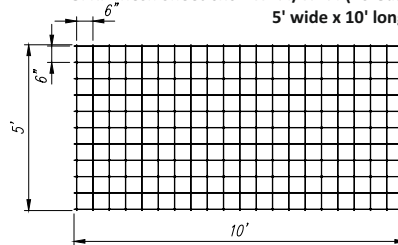


FIBERGLASS WIRE MESH

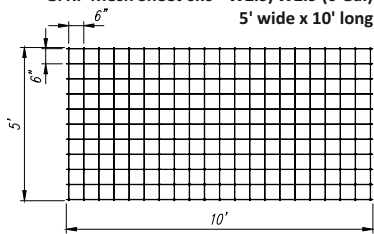
GFRP Mesh Roll 6x6 - W1.4/W1.4 (10 Ga.)
5' wide x 150' long



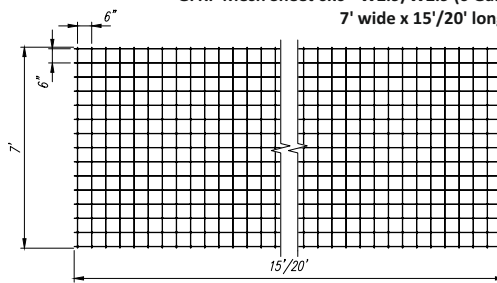
GFRP Mesh Sheet 6x6 - W1.4/W1.4 (10 Ga.)
5' wide x 10' long



GFRP Mesh Sheet 6x6 - W2.9/W2.9 (6 Ga.)
5' wide x 10' long



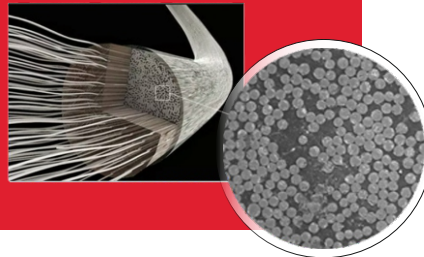
GFRP Mesh Sheet 6x6 - W2.9/W2.9 (6 Ga.)
7' wide x 15'/20' long



WHAT IS GFRP?

GFRP - GLASS FIBER REINFORCED POLYMER.

Glass fibers provide high strength, while the polymer transfers the load from filament to filament, and protects the fibers from chemical attack.



WHY CHOOSE BINEVIR FIBERGLASS WIRE MESH



No memory:
retains its flat shape when unrolled



High corrosion resistance:
resistant to chlorides and water exposure



Light weight:
3x lighter than steel



High tensile strength:
2 times stronger than steel

STANDARD ROLLS

Wire size	Width		Length		Spacing		Roll Weight	
	ft	mm	ft	mm	in	mm	lbs	kg
GFRP W1.4 (10 Ga.)	5'	1524	150'	45720	6x6	150x150	40.25	18.26

STANDARD SHEETS

Wire size	Width		Length		Spacing	Sheet Weight		Package	Skid Weight		
	ft	mm	ft	mm		lbs	kg		pcs	lbs	kg
GFRP W1.4 (10 Ga.)	5'	1524	10'	3048	6x6	150x150	2.68	1.22	100	268.3	121.7
	5'	1524	10'	3048	6x6	150x150	5.98	2.71	100	597.9	271.2
GFRP W2.9 (6 Ga.) Sand coated	7'	2133	15'	4572	6x6	150x150	12.55	5.69	50	627.6	284.7
	7'	2133	20'	6096	6x6	150x150	16.74	7.59	50	836.9	379.6

No memory,
unrolls flat



FIBERGLASS WIRE MESH

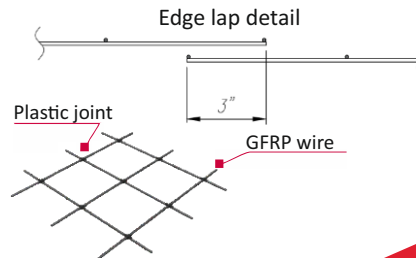
Binevir Fiberglass Wire Mesh is designed to replace welded wire mesh used in various construction applications. Fiberglass Wire Mesh consists of high tensile strength fiberglass wires connected by a plastic joints. Supplied in rolls and sheets.

FIBERGLASS WIRE MESH MECHANICAL PROPERTIES

Wire size	Nominal Diameter		Nominal Area		Guaranteed Ultimate Tensile Force		Mean Ultimate Tensile Strength		Tensile modulus of elasticity	
	in	mm	sq. in	sq. mm	lb	kN	ksi	MPa	ksi	MPa
GFRP W1.4 (10 Ga.)	0,134	3,40	0,014	9,07	2040,05	9,07	145,00	1000,00	6887,50	47500,00
GFRP W2.9 (6 Ga.) Sand coated	0,192	4,88	0,029	18,69	4202,65	18,69	145,00	1000,00	6887,50	47500,00

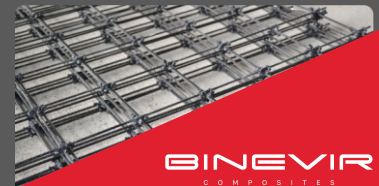
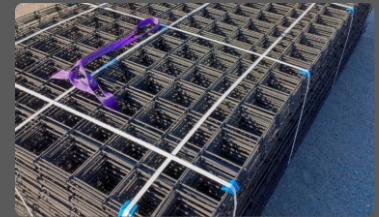
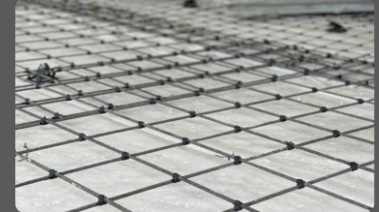
FIBERGLASS WIRE MESH CROSS SECTIONAL AREA

Wire size	Diameter		Fiberglass wire mesh cross sectional area		Area per foot of width (sq. in) center to center wire spacing	Area per metre of width (sq. mm) center to center wire spacing
	in	mm	sq. in	sq. mm	6"	150 mm
GFRP W1.4 (10 Ga.)	0,134	3,40	0,014	9,07	0,028	60,50
GFRP W2.9 (6 Ga.) Sand coated	0,192	4,88	0,029	18,69	0,058	124,63



Areas of application

- Slab-On-Ground temperature and shrinkage control reinforcement
- Concrete structure rehabilitation
- Shotcrete reinforcement
- Precast concrete reinforcement



Rust free



3x lighter
than steel



Lower
installation cost



2x stronger
than steel



Easier to haul



BINEVIR
COMPOSITES

1206 Stirling Road 6A/B
Dania Beach, FL 33004 USA
+1 (305) 833 7066
www.binevir.us
info@binevir.us