



**BINEVIR**  
COMPOSITES OF THE FUTURE

GFRP and BFRP products  
for the construction industry

**Completed Projects**



## 2 / About company



Leading Developer and manufacturer of advanced composite materials for construction, mining, highway and electric power industries



National partner of world leading composite companies, transfer of high technologies to Russia



Strong presence in the European and the US markets for composite construction materials



Production facilities: Istanbul, Turkiye



Pioneer of basalt technologies in Europe



Global presence with more than 40 dealers worldwide



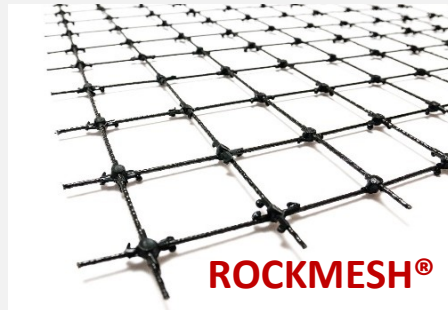


# 3 / Our products

## Composite reinforcing bars and mesh



**ROCKBAR®**



**ROCKMESH®**

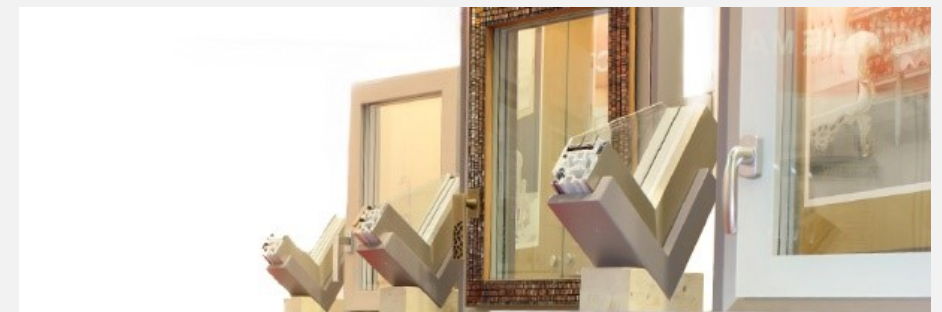
## Wall ties and façade dowels



## Composite poles and posts



## Composite window profile systems



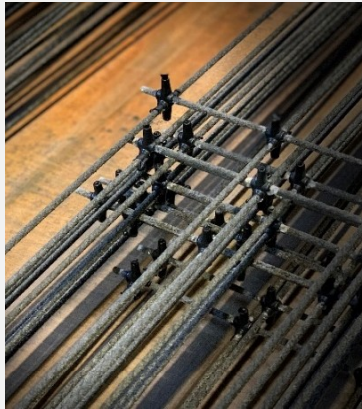
- ✓ Superior Strength and Durability
- ✓ Low weight – 5X lighter than steel
- ✓ Chemical and alkali resistance

- ✓ Non-corrosive
- ✓ Low thermal conductivity, electrically and magnetically non-conductive

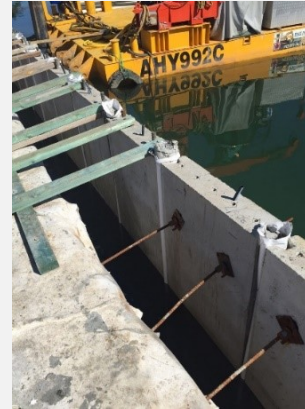


## 4 / Customized solutions

Design and manufacture of bespoke composite reinforcement solutions



Composite mesh with enlarged plastic connections



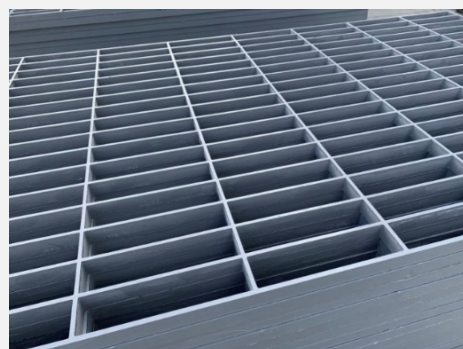
Non-standard size composite mesh with and without sand-coating



Composite profile railings and decking



Production of colored composite rebar



Composite gratings for various designs





5

Composite ROCKBAR® and ROCKMESH®  
Application

**BINEVIR**  
COMPOSITES

**SUBSET OF OUR  
COMPLETED PROJECTS**



6

Composite ROCKBAR® and ROCKMESH®  
Florida, USA, 2019

**BINEVIR**  
COMPOSITES



Townhouse Project in the center of Miami. Fully reinforced with composite rebar ROCKBAR®.



7

Composite ROCKBAR® and ROCKMESH®  
Florida, USA, 2019

**BINEVIR**  
COMPOSITES



Multi-family. Fully reinforced with composite rebar ROCKBAR®.



8

Composite ROCKBAR® and ROCKMESH®  
Florida, USA, 2019

**BINEVIR**  
COMPOSITES



Seawall Plate reinforcement project. Composite rebar and mesh were used





9

Composite ROCKBAR® and ROCKMESH®  
Florida, USA, 2019

**BINEVIR**  
COMPOSITES



Construction of the first of its kind skate park using only composite reinforcement products (Located under the I-95).



10 /

Composite ROCKBAR® and ROCKMESH®  
Florida, USA, 2022

**BINEVIR**  
COMPOSITES



Pool Project. Fully reinforced with composite rebar ROCKBAR® and bent bars.



11

**Composite ROCKBAR® and ROCKMESH®**  
California, USA, 2020

**BINEVIR**  
COMPOSITES

Industrial Drain Channel  
Retrofit Project





12 /

**Composite ROCKMESH®**  
Arizona, USA, 2024

**BINEVIR**  
COMPOSITES

Large building





13

**Composite ROCKBAR® and ROCKMESH®**  
Florida, USA, 2020

**BINEVIR**  
COMPOSITES

Florida Keyes Airport,  
Aircraft Hangar Construction





14

Composite **ROCKBAR®** and **ROCKMESH®**

Foundation of 17-story bldg., Drozhzhino-2, Moscow, 2016

**BINEVIR**  
COMPOSITES



Rebar **ROCKBAR®** ,  $\varnothing=15$  mm

Total rebar length: 29,343 m.

Total rebar weight: 11,284 Kg.  
(equivalent steel rebar weight: 56,000 Kg.)



15 /

**Composite ROCKBAR® and ROCKMESH®**  
Implemented projects, Moscow, Russia, 2017

**BINEVIR**  
COMPOSITES

Reinforcement of a foundation plate of a multi-story building in “Salaryevo Park” district, Moscow, 2017



	ROCKBAR® Ø=18 mm	ROCKBAR® Ø=20 mm	ROCKBAR® Ø=22 mm	Total length of rebar
Building 1	19,289 m	1,037 m	686 m	21,012 m
Building 2	18,667 m	1,542 m	2,429 m	22,638 m



16 /

## Composite ROCKBAR® and ROCKMESH®

Jizan flood mitigation canal, Saudi Arabia, 2019

**BINEVIR**  
COMPOSITES

Binevir composite rebar (straight and bent) used for reinforcement of Jizan flood mitigation canal (total length - 21 km). Overall project included over 11 mln linear meters of GFRP rebar with diameter  $\varnothing 13$  mm.







17 /

Composite rebar ROCKBAR® and ROCKMESH®  
Implemented projects

**BINEVIR**  
COMPOSITES



Trench reinforcement, Turkmenistan, 2014



Bridge deck, Northern Ireland, 2010

Renovation of fountains, Poland, 2010



18 /

Composite ROCKBAR® and ROCKMESH®

Implemented projects, Novorossiysk, Russia, 2012-2015

**BINEVIR**  
COMPOSITES



Port container storage facility, Russia, Novorossiysk, 2015



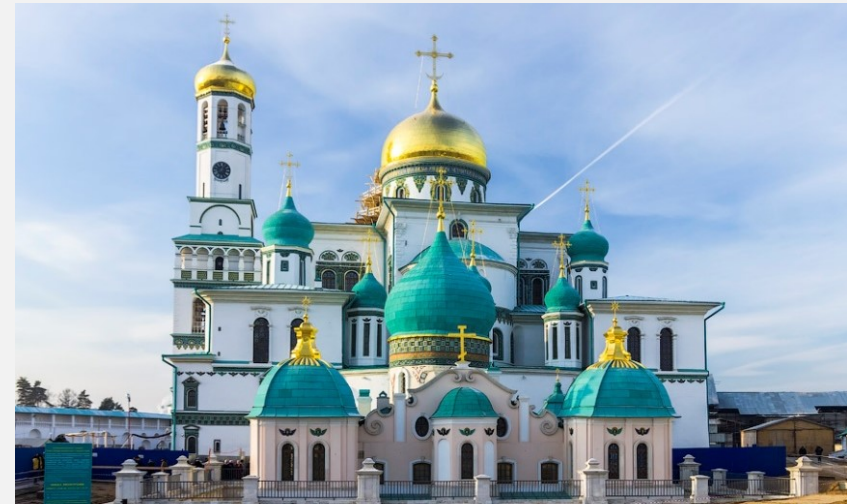
Construction of a wall of the bank stabilization structure, Russia, Novorossiysk, 2012



19

Composite ROCKBAR® and ROCKMESH®  
Implemented projects

**BINEVIR**  
COMPOSITES



Reconstruction of the P.I. Tchaikovsky Concert Hall and the New Jerusalem Monastery, Moscow, 2012



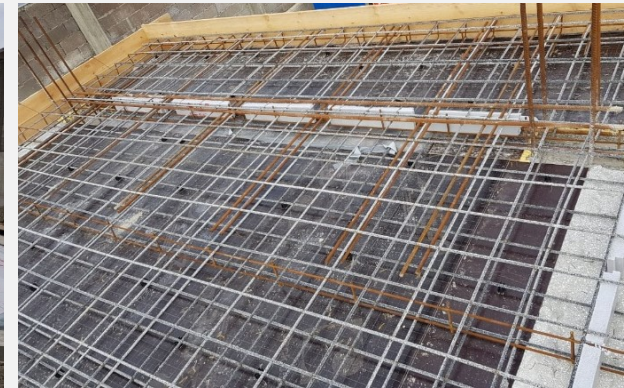
Construction of a fountain in the Tchaikovsky park, Novorossiysk, 2012



20 /

Composite ROCKBAR® and ROCKMESH®  
Implemented projects

**BINEVIR**  
COMPOSITES



Reinforcement of the foundation of a multi-story house, Novorossiysk, 2018  
Products used - composite basalt rebar with Ø10 and 14 mm



Reinforcement of the building foundation,  
Gelendzhik, 2017



Reinforcement of the foundation of a private house,  
"Cottage village "Fortuna", Khabarovsk region, 2013





21 /

## Application of composite mesh ROCKMESH® Construction of Louvre in Abu-Dhabi, UAE, 2017

**BINEVIR**  
COMPOSITES

Composite mesh ROCKMESH® used for reinforcement of Louvre pool walls, UAE.  
THERMOSAVE® Dowels were used to hold the mesh.



August, 2017



November, 2017



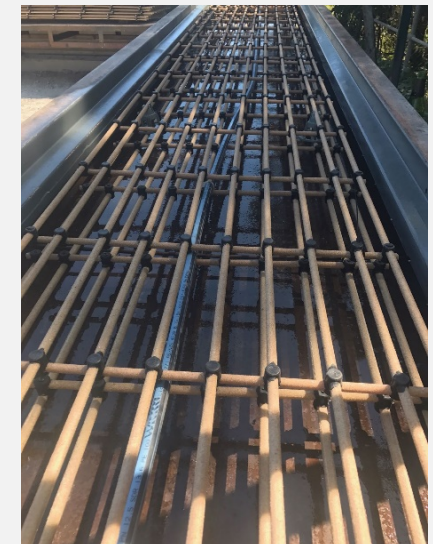


22 /

## Application of composite mesh ROCKMESH® Reinforcement of seawalls, Australia, 2017

**BINEVIR**  
COMPOSITES

ROCKMESH® used for manufacture of concrete seawalls. In this system ROCKMESH® eliminates the possibility of concrete degradation and increases service life of concrete structure up to 100 years.





23 /

**Composite mesh ROCKMESH®**  
Implemented projects, Great Britain, 2019

**BINEVIR**  
COMPOSITES



Roof of the «Bentley Motors» factory. Crewe, Great Britain, 2019.



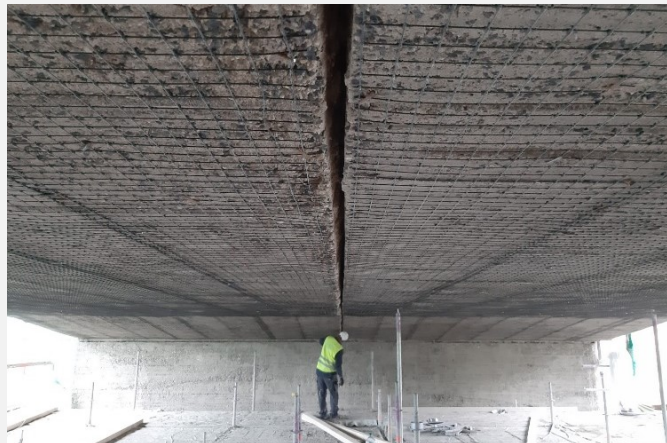
24 /

## Composite and ROCKMESH®

Implemented projects, Czech Republic, 2019

**BINEVIR**  
COMPOSITES

Prague, Czech Republic, 2019.  
Negrelli Viaduct reconstruction  
with composite rebar and  
mesh.



Ústí nad Labem, Czech Republic, 2019.  
Reconstruction of the railway bridge with  
Composite mesh/





25 /

## Composite mesh ROCKMESH®

Implemented projects, Birmingham, Great Britain, 2019

**BINEVIR**  
COMPOSITES



Reinforcement of concrete floor in a shopping center.  
3000 sq.m. of Rockmesh® was applied.

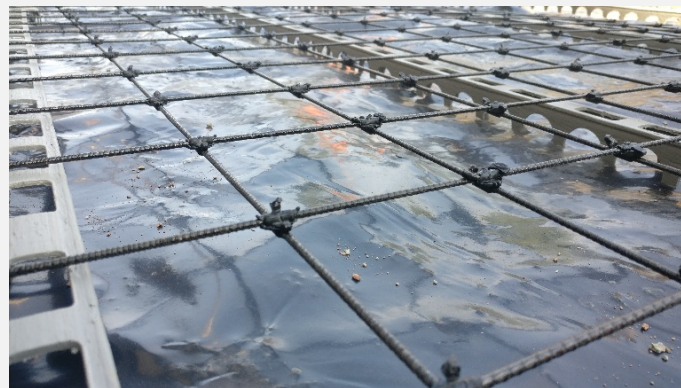




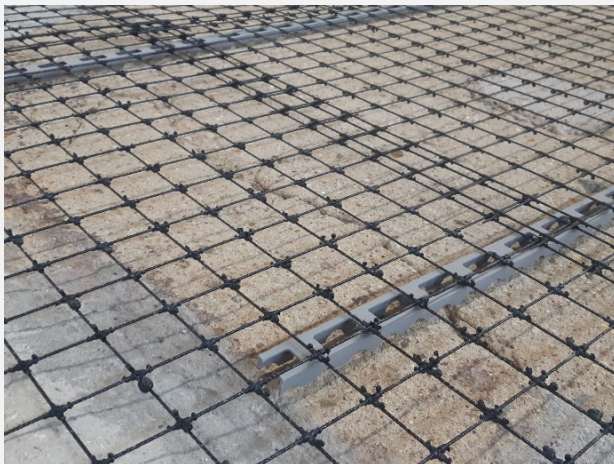
26 /

Composite ROCKBAR® and ROCKMESH®  
Implemented projects, Czech Republic, 2018

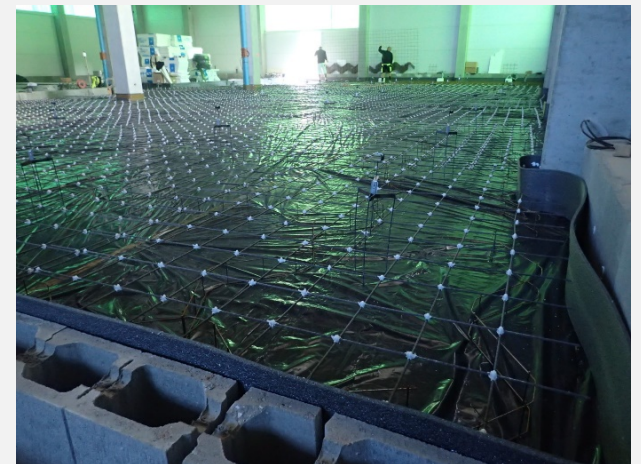
**BINEVIR**  
COMPOSITES



Tišnov, Czech Republic, 2018 , reinforcement of the access road with the use of composite mesh



Libčice nad Vltavou, Czech Republic, 2018  
Floor reconstruction at a manufacturing facility



Letohrad, Czech Republic, 2018,  
Reinforcement of the floor of the play hall



27 /

Composite ROCKBAR® and ROCKMESH®  
Implemented projects, Moscow, Russia, 2017

**BINEVIR**  
COMPOSITES



ROCKMESH® composite mesh in concrete reinforcement of a three-tier parking, Moscow, 2017



ROCKMESH® composite mesh in other civil engineering projects



28 /

## Composite ROCKMESH®

Implemented projects, Czech Republic, 2017

**BINEVIR**  
COMPOSITES



Vlčkov, Czech Republic, 2017  
ROCKMESH Ø 3mm / 100x100mm  
A = 300 sq.m.

Náchod, Czech Republic, 2017  
ROCKMESH Ø 3mm /  
100x100mm  
A = 90 sq.m





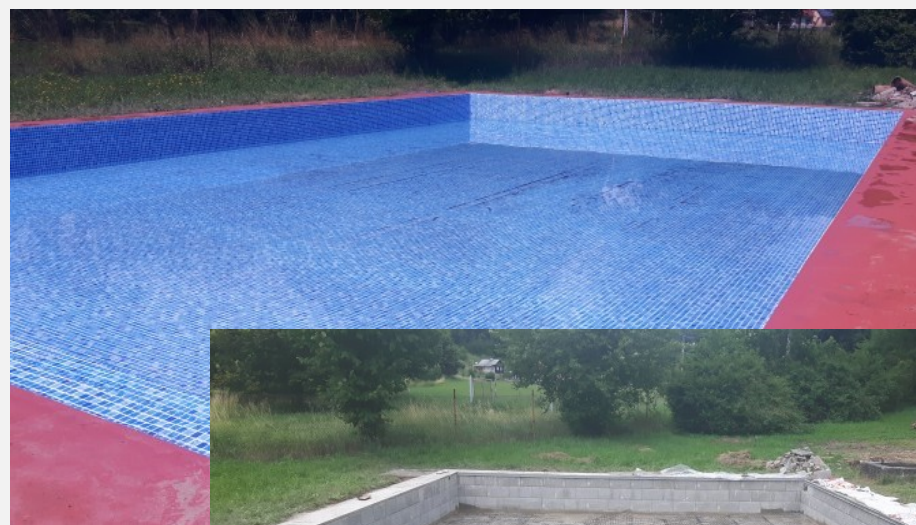
29

## Application of composite mesh ROCKMESH® in concrete screed pools

**BINEVIR**  
COMPOSITES



Germany, 2017  
Composite mesh  $\varnothing$  3 mm /  
100x100 mm



Moravská Chrastová,  
Czech Republic, 2017  
Composite mesh  $\varnothing$  3 mm / 100x100 mm



30 /

Contacts

**BINEVIR**  
COMPOSITES



**Ability Network International**

**Thank you for your attention!**

Phone:

Gene Ostrovsky +1 (203) 313-4111 m.

Jorge Gonzalez +1(516) 941-8807 m.

Email:

[genost@abilityni.com](mailto:genost@abilityni.com)

[jorge@abilityni.com](mailto:jorge@abilityni.com)

[info@abilityni.com](mailto:info@abilityni.com)

Website:

[www.abilityni.com/construction](http://www.abilityni.com/construction)